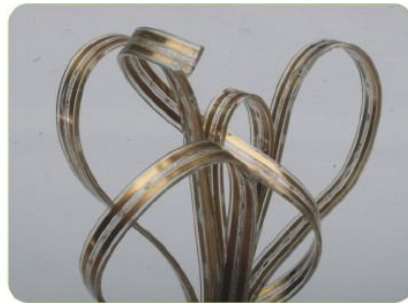
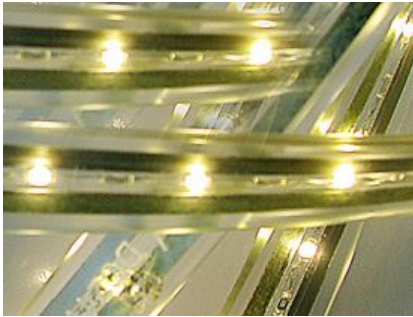


LW-SFR-F04-24V-WW

PLEASE READ THESE INSTRUCTIONS CAREFULLY BEFORE INSTALLATION
LEAVE A COPY FOR THE USER/MAINTENANCE ENGINEER FOR FUTURE REFERENCE



SPECIFICATIONS: LW-SFR-F04-24V-WW

Dimension: 2.5* (0.09") H X 13mm(1/2") W, rectangular LED Flex Ribbon

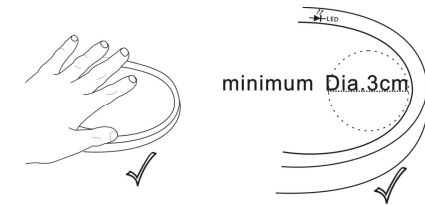
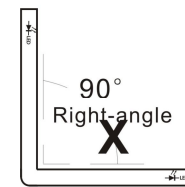
1. Light Color: Warm White
2. Operating Voltage: DC24V (MAX)
3. LED Quantity: 60LED/M (39.4") spacing 16.67mm (0.65"); SMD0805
4. Power Consumption: 2.4W/M (0.73FT)
5. Max. Connection Length: 12M (40 FEET)
6. CE and RoHS compliant
8. IP rate: IP65, suitable for indoor and outdoor use

II. CONNECTION ACCESSORIES (upon request)



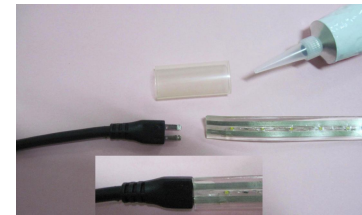
IMPORTANT INSTALLATION INFORMATION

1. Before commencing installation turn off power
2. Do not install near flammable surfaces or possibility of in the future.
3. Protection Rate: IP65 (protected against dust and splash from water). Note: All joints end caps and connections must be sealed correctly to achieve IP65.
4. A heat gun is required for installation (not supplied).
5. Ensure that polarity and all connections are correct before energizing the mains supply.
6. Work Temperature: -10°C ~ 40°C. Install at room temperature.
7. Min. Flexional Diameter: 30mm (1"). Note: The Flex Ribbon should not be bended over its minimum flexional diameter.



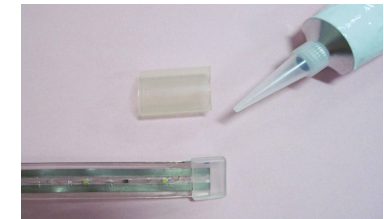
IV. INSTALLATION INSTRUCTIONS

1. Accessories Usage



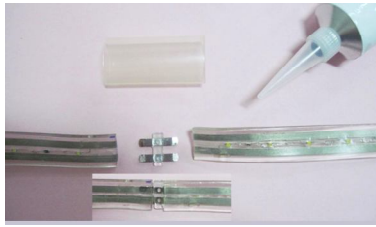
Front Connector

- a. Combine light with Front Connector
- b. Slide a Heat Shrink Tube
- c. Apply glue to the inside part of tube
- d. Heat around the tube with Heat Gun

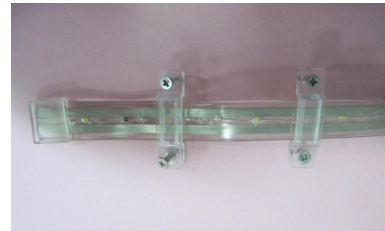


End Cap

- a. Combine light with End Cap
- b. Slide a Heat Shrink Tube
- c. Apply Glue to the inside part of tube
- d. Heat around the tube with Heat Gun

**Middle Connector**

- Join lights on both sides of Middle Connector
- Slide a Heat Shrink Tube
- Apply glue to the inside part of tube
- Heat around the tube with Heat Gun

**Clips and Screws**

- Use Clips and Screws to install lights when need

Front Main Connector

- Combine light with Front Connector
- Slide a Heat Shrink Tube
- Apply glue to the inside part of tube
- Heat around the tube with Heat Gun

Middle Connector

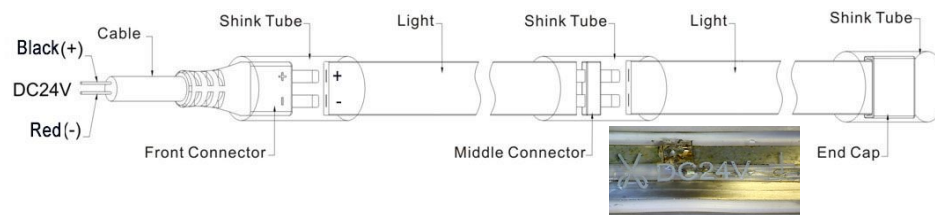
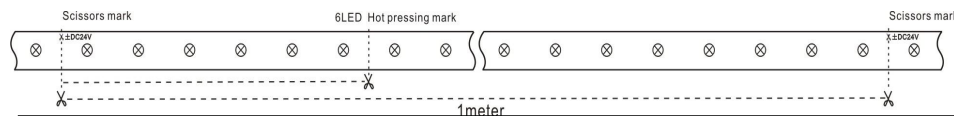
- Join lights on both sides of Middle Connector
- Slide a Heat Shrink Tube
- Apply glue to the inside part of tube
- Heat around the tube with Heat Gun

End Cap

- Combine light with End Cap
- Slide a Heat Shrink Tube
- Apply Glue to the inside part of tube
- Heat around the tube with Heat Gun

2. Connect the light to a LED Power supply and Front Connector, ensuring the polarity is correct.

Note: Black (+), Red (-) of the Front Connector. Polarity is marked on back near voltage mark "DC24"

**3. The light can be cut per unit (6LED/unit) at the "hot pressing mark", or per meter at the printed "scissors mark" on the light.****Other Accessories:**

- Item: U13MM50 Mount. U- Channel
- Item: **16192LW**: 24VDC Dimmable Power supply (Class Two Type). One hard wire power supply will power two rolls (max).



WARNING: ONLY QUALIFIED PERSONNEL SHOULD PERFORM INSTALLATION. TO AVOID ELECTRICAL SHOCK OR COMPONENT DAMAGE, DISCONNECT POWER BEFORE ATTEMPTING INSTALLATION OF THE POWER SUPPLIES AND/OR MODULES (FLEX STRIP). DISCONNECT POWER BEFORE INSTALLING OR CUTTING!

When using power supplies; the following basic safety features should be verified in addition to any other application specific concerns and local safety codes:

Short circuit protection

- Overload protection
- Overheat protection
- Correct wire gauge
- Correct output voltage, including consideration for ripple and spikes.